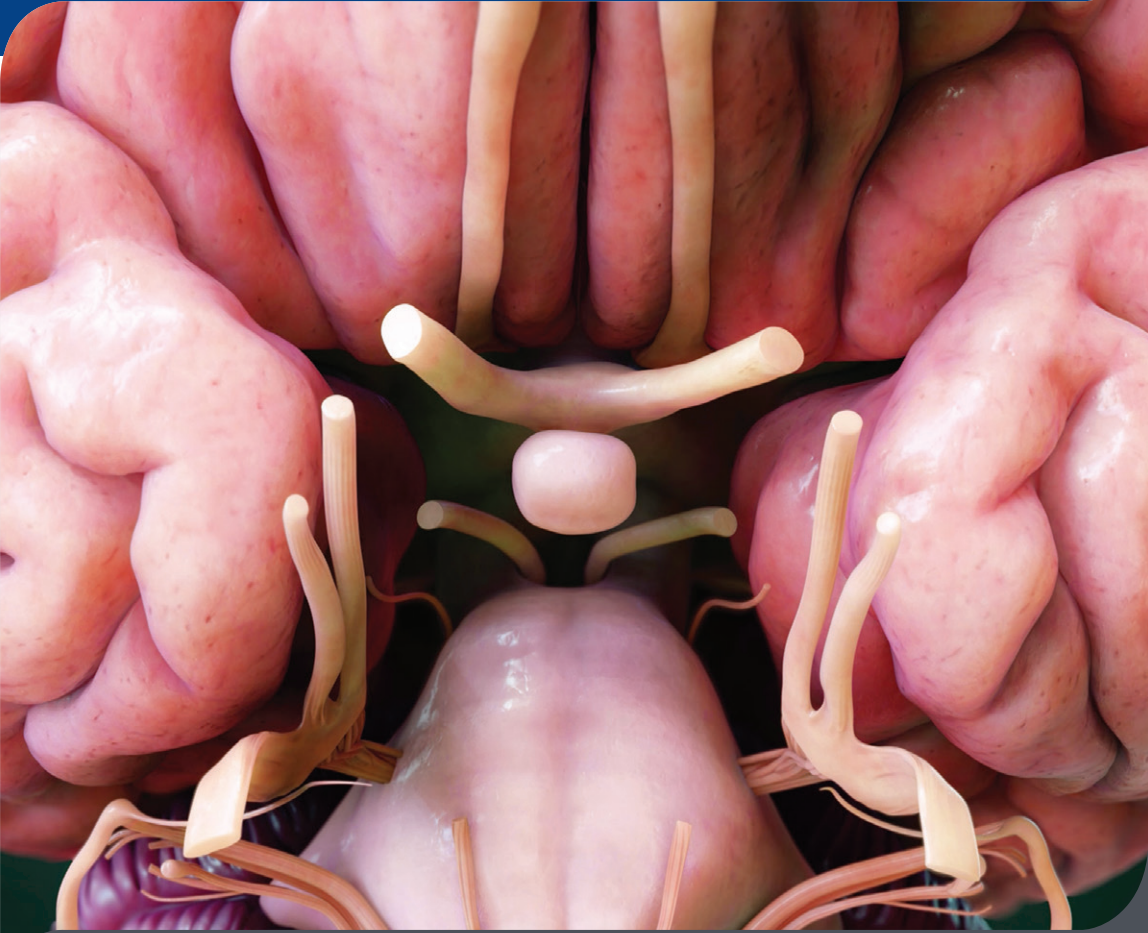


2016

Barrow Pituitary Symposium
Focus: Management of Pituitary Tumors



Saturday, November 5, 2016

Registration and Agenda Inside

Leonard Goldman Auditorium
350 West Thomas Road | Phoenix, Arizona



Goal & Target Audience

Endocrinologists, internists, primary care physicians, and other specialists will have a deeper understanding of pituitary dysfunction in order to provide rapid, effective treatment ensuring a reduction in chronic hormonal abnormalities and improvement in quality of life.

Objectives

1. Describe endovascular techniques for the performance of Inferior Petrosal Sinus Sampling and the potential complications associated with these techniques.
2. Recognize common visual pathway symptoms that could be caused by expansile lesions of the sella/parasellar region.
3. Demonstrate how to read a visual field and the difference between compressive visual field defects, and other conditions such as increased intracranial pressure, glaucoma and cortical ischemia.
4. Discuss the surgical indication for the treatment of Acromegaly and the limitations of surgical intervention for Acromegaly.
5. Describe current recommendations for the management of women with prolactinomas who wish to become pregnant.
6. Describe the best treatments of pregnant women with Cushing's Disease.

Accreditation

St. Joseph's Hospital and Medical Center (SJHMC) is accredited by the Accreditation Council for Continuing Medical Education to provide continuing medical education for physicians.

Certification

St. Joseph's Hospital and Medical Center designates this live activity for a maximum of 6.75 AMA PRA Category 1 Credits™. Physicians should only claim credit commensurate with the extent of their participation in the activity.

Disclosure Policy

It is the policy of St. Joseph's Hospital and Medical Center to insure balance, independence, objectivity and scientific rigor in all of its sponsored or jointly sponsored educational programs. All those in control of content will disclose all relevant relationships with commercial interests. Detailed disclosures will be made in the activity handout materials.

The information presented at this CME program represents the views and opinions of the individual presenters, and does not constitute the opinion or endorsement of, or promotion by, St. Joseph's Hospital and Medical Center or its affiliates. Content has been reviewed to ensure it is balanced, unbiased, and promotes quality or improvements in healthcare rather than the proprietary interests of any commercial interest. However, each program attendee must always use his/her own personal and professional judgment when considering further application of this information, particularly as it may relate to patient diagnostic or treatment decisions including, without limitation, FDA-approved uses and any off-label uses.

Faculty

Felipe Albuquerque, MD

*Director, Endovascular Neurosurgery
Barrow Neurological Institute*

James Deer, MD

*Endocrinologist
Abrazo Medical Group/Diabetes Center*

Laura A. Knecht, MD

*Medical Director, Pituitary Center
Barrow Neurological Institute*

Andrew S. Little, MD

*Co-Director
Barrow Interdisciplinary Skull Base Program
& Barrow Pituitary Center
Barrow Neurological Institute*

William L. White, MD

*Chief, Surgical Endocrinology
Surgical Director, Barrow Pituitary Center
Barrow Neurological Institute*

Guest Faculty

Lewis S. Blevins Jr., MD

*Medical Director,
California Center for Pituitary Disorder
University of California San Francisco*

Angela Herro, MD

*Neuro-Ophthalmologist
Horizons Eye Specialists & Lasik Center*

John A. Jane Jr., MD

*Professor of Neurosurgery &
Pediatric Neurosurgery Residency
Program Director, Department of Neurosurgery
University of Virginia*

Mark E. Molitch, MD

*Martha Leland Sherwin Professor of Endocrinology
Northwestern University Feinberg School of Medicine*

Andreas Moraitis, MD

*Endocrinologist
University of Michigan Hospitals and Health Centers*

AGENDA | Barrow Pituitary Symposium

Focus: Management of Pituitary Tumors

Saturday, November 5, 2016

7:30 Registration & Breakfast

7:55 Welcome & Introductions | *Laura A. Knecht, MD*

8:00 3D Anatomy of the Skull Base
Andrew S. Little, MD

8:15 Introduction to Transsphenoidal Surgery
Andrew S. Little, MD

8:30 Surgery for Pediatric Pituitary Tumors
John Jane, MD

9:00 Pregnancy and Pituitary Tumors
Mark E. Molitch, MD

9:30 Break

9:45 Neuro-ophthalmology of Parasellar Tumors
Angela Herro, MD

10:15 Radiation Options for Pituitary Tumors and Treatment Guidelines
William L. White, MD

10:45 Incidentalomas and Nonsecreting Tumors
Mark E. Molitch, MD

11:15 How Inferior Petrosal Sinus Sampling is Performed
Felipe Albuquerque, MD

11:30 Interpretation and Indications for IPSS
Laura A. Knecht, MD

11:50 Discussion/Q&A | Moderator: *Laura A. Knecht, MD*

12:10-1:30 Lunch & Non-CME Presentation in Sonntag Pavilion

12:40-1:10 Treating Patients with Hypercortisolism:
Mild to Overt Cushing's Syndrome
Andreas Moraitis, MD

1:30 Welcome Back & Introductions | *Andrew S. Little, MD*

1:30 Treatment of Acromegaly
John Jane, MD

2:00 Medical Management of Acromegaly
Lewis S. Blevins Jr., MD

2:30 Not all Sellar Lesions are Pituitary Tumors:
Update on Rathke's Cleft Cyst and Craniopharyngioma
Andrew S. Little, MD

3:00 Break

3:15 Management of Hyponatremia
Lewis Blevins, MD

3:35 Medical Management of Prolactinomas
James Deer, MD

4:05 Discussion/Q&A | Moderator: *Andrew S. Little, MD*

4:30 Adjourn

Visiting Arizona

Outdoor Activities

Phoenix is known for great weather, and people can't wait to get outdoors to hike, bike, swim and play. There are many opportunities in Phoenix and the surrounding area. Visit www.visitphoenix.com to find out which activities interest you!

Northern Arizona

You have probably seen pictures of the awe inspiring Grand Canyon or the beauty of the red rock in Sedona. If you have time to spend an extra day or two exploring Arizona, you may want to take a drive to Northern Arizona. Each town is unique and charming and offers an array of activities, dining and shopping opportunities. Sedona is approximately a 2 1/2 - hour drive north of Phoenix, and the Grand Canyon is approximately a 4-hour drive north of the city. The official website for the Grand Canyon is <http://www.nps.gov/grca>

Dress

Dress for all sessions is business casual. Temperatures in November average from 73 degrees during the day to 46 degrees at night. Please keep in mind that meeting room temperatures vary. So, wear layered clothing to ensure your comfort.

Dining

Phoenix is home to some of the world's finest chefs and the best restaurants offering your taste buds the opportunity to try everything from Thai to Mexican to traditional American cuisine. To learn more about the dining options you will have during your stay in Phoenix, visit www.azcentral.com/ent/dining

Golf

In Greater Phoenix, more than 200 championship golf courses are available to visitors year round. Bring your clubs and soak up the sun. For a listing of golf courses, visit www.visitphoenix.com

Shopping

There are many venues to shop and dine in Phoenix, including the Biltmore Fashion Park, Kierland Commons, Desert Ridge Market Place, Scottsdale Fashion Square, Chandler Fashion Center, The Borgata of Scottsdale and endless smaller boutiques throughout the state.

Access Your Complimentary Concierge Service Today

From event tickets and dining reservations to vacation planning and transportation arrangements, your concierge saves you valuable time so you can enjoy what's most important to you. 602.406.4949 concierges@dignityhealth.org www.lesconcierges.com/stjosephs



Hotels Near Barrow Neurological Institute

Hotels Within Walking Distance

HILTON SUITES

10 E. Thomas Rd., Phoenix, AZ 85012
602-222-1111
Barrow ID 0701078
www.phoenixsuites.hilton.com

HILTON GARDEN INN

4000 N. Central Ave., Phoenix, AZ 85012
602-279-9811
www.hiltongardeninn.com

HAMPTON INN MIDTOWN

160 W. Catalina Dr., Phoenix, AZ 85013
602-200-0990
www.hamptoninn.com

Resorts Within 15-20 Minutes

RITZ CARLTON PHOENIX

2401 E. Camelback Rd., Phoenix, AZ 85016
602-468-0700
Corporate ID: BARROW
www.ritzcarlton.com/hotels/phoenix

ARIZONA BILTMORE RESORT & SPA

2400 E. Missouri Ave., Phoenix, AZ 85016
602-955-6600
www.arizonabiltmore.com

THE PHOENICIAN SCOTTSDALE

6000 E. Camelback Rd., Scottsdale, AZ 85251
480-941-8200
www.thephoenician.com

Registration Form

Barrow Pituitary Symposium | November 5, 2016

	Early Bird Registration <i>Deadline 10/16/16</i>	Late Registration <i>After 10/16/16</i>
MDs/DOs	\$150	\$200
Residents/Nurses/SJHMC Staff	\$90	\$140

Name _____

Email _____

MD DO RN Resident/Fellow Other

Institution _____

Address _____

City _____ State _____ Zip _____

Business Phone _____ Fax _____

Payment

Check or money order payable to: St. Joseph's Hospital and Medical Center
(A \$20 charge applies to checks returned for insufficient funds.)

Charge my: AMEX VISA MC DISCOVER

Card # _____

Expires _____

Verification # _____ Billing Zip Code _____

Printed Name on Card _____

I authorize Barrow Neurological Institute to charge the amount determined by the Barrow Neurological Institute as registration fees to my credit card.

Signature _____

Return registration form with payment to:

Barrow Neurological Institute
Conference Planning Office
350 West Thomas Road
Phoenix, Arizona 85013

Charge card registrations can be faxed to 602-294-5028.

**For further information, call 602-406-3067
or email lindsey.possehl@dignityhealth.org**

Refunds: A full refund, minus a 20% handling fee, will be made for cancellations prior to October 16, 2016. All refund requests must be received in writing by that date.

No refunds will be made thereafter.

Dignity Health Arizona Region is an approved provider of continuing nursing education by the Western Multi-State Division, an accredited approver American Nurses Credentialing Center's Commission on Accreditation.

