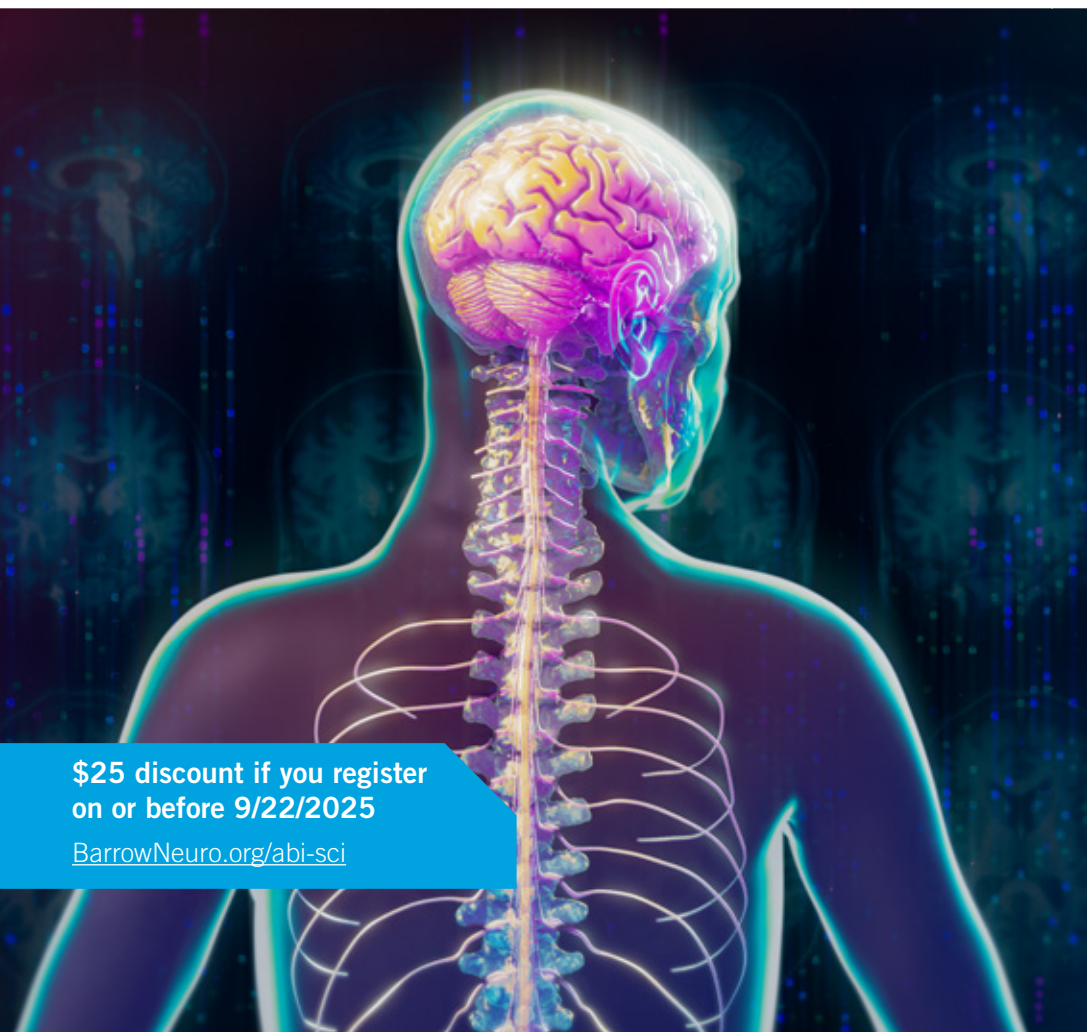


Hybrid Event (in person or virtual)

2025 Barrow Acquired Brain Injury & Spinal Cord Injury Symposium



**\$25 discount if you register
on or before 9/22/2025**

BarrowNeuro.org/abi-sci

Oct. 11-12, 2025

Barrow Neurological Institute, Phoenix, AZ

In Person or Virtual Conference

All times are Pacific Daylight Time (PDT)



Barrow
Neurological Institute

Minding What Matters Most®

Course Goal

This interdisciplinary symposium will focus on the current evidenced-based practice and research for the treatment of those with acquired brain injury and spinal cord injury. The symposium will provide an educational opportunity for rehabilitation professionals focusing on the medical management and rehabilitative treatment interventions.

Course Learning Objectives

1. The participant will be able to describe how medical interventions affect functional recovery.
2. The participant will describe current research in acquired brain injury and spinal cord injury.
3. The participant will be able to identify challenges associated with living with a disability.
4. The participant will be able to list therapeutic interventions utilized post acquired brain injury and spinal cord injury.

Course Completion Requirements

1. To obtain PT, OT and SLP CEUs from this symposium, you must login and logout and be in attendance throughout the agenda to receive full CEUs. PT, OT, and SLP are not eligible for partial credit and must attend the course in its entirety to receive CEUs.
2. Completion of the online post course evaluation is required to receive CEUs. SLPs must complete the post course evaluation and select their discipline in order to provide their ASHA number and give consent for CEUs to be submitted to ASHA on their behalf.

Target Audience

This program is designed for allied health professionals who treat persons with acquired brain injury and SCI.

Barrow Neurological Institute is an AOTA Approved Provider of professional development. PD activity approval ID#12529. This live/distance learning-interactive activity is offered at 13.75 CEUs [intermediate; OT Service Delivery/Foundational Knowledge]. AOTA does not endorse specific course content, products, or clinical procedures.



(ID #12529-13.75 contact hours)



(13.75 contact hours)



ASHA CE
APPROVED
PROVIDER

St. Joseph's Hospital & Medical Center

Intermediate Level

1.35 ASHA CEUs

Disclosure statements available on the website:

BarrowNeuro.org/abi-sci

Barrow Neurological Institute Faculty

Katie Asher, PT, DPT
Amanda Beltran, PT, DPT
Bradley Bennin, DO
Rachel M. Bond, MD, FACC
Yvette Brown-Shirley, MD
Katie Chun, PT, DPT
Steve Frey, OTR/L
Karine Hageboutros, PsyD
Gloria Interiano, CCC-SLP
Sammi Kesler, OTR/L

Christina Kwasnica, MD
Mark Linsenmeyer, MD
Tiffany Meites, PhD, ABPP
Marissa Miller, CCC-SLP
Caitlin Sherry, OTD, OTR/L
Kaitlyn Verfuether, CTRS
Stepanie Voss, CCC-SLP
Claire Wareham, OTD, OTR/L
Candyce Williams, MD

AGENDA (This Course will be provided on Pacific Daylight Time)

Day 1 | Oct. 11, 2025

7:55 a.m. Welcome

Candyce Williams, MD

8 a.m. Keynote SCI: Building Breakthrough Technology for the Brain

Austin Mueller, BSBE, NSc

9 a.m. Keynote ABI: Stroke in Women: Unraveling the Impact of Hormones, Menopause, and Reproductive Health on Risk and Recovery

Rachel M. Bond, MD, FACC

9:55 a.m. Break

10:15 a.m. Neuromodulation and Robotics for Stroke Motor Recovery

Christina Kwasnica, MD

11 a.m. Urologic Management after SCI

Christopher E. Wolter, MD

Noon Lunch Break

1 p.m. Guiding Families Through Disorders of Consciousness: Evidence-Based Approaches to Prognosis and Treatment

Mark Linsenmeyer, MD

1:45 p.m. Differentiating Neurodegenerative vs. Post Stroke Aphasia; Treatment Considerations **(Goldman)**

Karine Hageboutros, PsyD

1:45 p.m. All Subluxed Shoulders Need T-L-C: A Shoulder Assessment and Kinesio Taping Protocol for Tone Management, Pain Management and Subluxation Alleviation (Lab) **(Sonntag)**

Steve Frey, OTR/L

Concurrent

2:30 p.m. The Utilization of AI Speech Monitoring in ALS Management **(Goldman)**

Julie Liss, PhD

2:30 p.m. Kinesio Taping Lab (Continued) **(Sonntag)**

Steve Frey, OTR/L

Concurrent

3:15 p.m. Break

3:30 p.m. From Research to Rehab: Supporting Bilingual Clients After TBI

Tamiko Azuma, PhD & Ileana Ratiu, PhD, CCC-SLP

4:30 p.m. Embrace the Journey: Aging With a Disability

Moderator: Kaitlyn Verfuether, CTRS Panelists: Paul Crane & Jared Monroe

5:15 p.m. Adjourn

Day 2 | Oct. 12, 2025

7:55 a.m. **Welcome**

Candyce Williams, MD

8 a.m. **Keynote: Spinal Cord Stimulation and Recovery of Motor and Autonomic Functions Following Spinal Cord Injury**

Andrei Krassioukov, MD, PhD, FRCPC

9 a.m. Sex and the SCIty: Addressing Sexuality after Spinal Cord Injury
Liza Criswell, OTR, ATP

9:45 a.m. **Break**

10 a.m. Aspects of Palliative Care Support in Brain and Spinal Cord Injuries
Bradley Bennin, DO

10:45 a.m. Strength After Stroke: Optimizing Force Production Through Resistance Training (**Goldman**)
Katie Asher, PT, DPT & Claire Wareham, OTD, OTR/L

10:45 a.m. Brains Club: A Community-Based Approach to Functional Cognition in the Domestic Violence Population (Lab) (**Sonntag**)
Stepanie Voss, CCC-SLP, Gloria Interiano, CCC-SLP, & Caitlin Sherry, OTD, OTR/L

Concurrent

11:30 a.m. Health Care Considerations for Native American Patients
Yvette Brown-Shirley, MD

11:30 a.m. Brains Club Lab (Continued)) (**Sonntag**)
Stepanie Voss, CCC-SLP, Gloria Interiano, CCC-SLP, & Caitlin Sherry, OTD, OTR/L

Concurrent

12:30 p.m. **Lunch Break**

1:30 p.m. An Interdisciplinary Approach to Cognition After Spinal Cord Injury
Marissa Miller, CCC-SLP, Sammi Kesler, OTR/L, Amanda Beltran, PT, DPT, & Tiffany Meites, PhD, ABPP

2:30 p.m. SCI Patient Experience: Babies and Parenting Post SCI: One Family's Experience
Katie Chun, PT, DPT & Ernie Chun

3:15 p.m. **Adjourn**



Registration Information

	Early Bird Registration <i>Deadline 9/22/25</i>	Late Registration <i>After 9/22/25</i>
Visiting Professionals	\$225.00	\$250.00
Dignity Health Employees	\$200.00	\$225.00
Students	\$100.00	\$100.00

Registration fee includes: Symposium, program materials and continuing education credits

Refund and Cancellation Policy: Barrow reserves the right to cancel or change any program for due causes. Cancellation of this program by Barrow or by the participant prior to the start of the conference will result in a full refund of tuition.



REGISTER NOW

Scan the QR code

For more information, please contact the Barrow Continuing Medical Education Office at CME@BarrowNeuro.org.

Guest Faculty

Tamiko Azuma, PhD

Associate Professor, Arizona State University
Tempe, AZ

Ernie Chun

Paralympian, father of two, Phoenix, AZ

Paul Crane, Architect

Phoenix Sun Wheelchair Basketball Athlete;
Executive Director of the Coyotes Sled Hockey
Association and sled hockey athlete

Liza Criswell, OTR, ATP

Level III Occupational Therapist; TIRR
Memorial Hermann Hospital
Pearland, TX

Andrei Krassioukov, MD, PhD, FRCPC

Professor and Endowed Chair, Division
of Physical Medicine and Rehabilitation,
Department of Medicine, University of British
Columbia, Vancouver, BC, Canada

Julie Liss, PhD

Senior Associate Dean and Professor, College
of Health Sciences, Arizona State University
Scottsdale, AZ

Jared Monroe, LMSW

Medical Social Worker; adaptive recreational
athlete

Austin Mueller, BSBE, NSc

Clinical Project Manager at Neuralink
Fremont, CA

Ileana Ratiu, PhD, CCC-SLP

Clinical Associate Professor & Program
Director, Arizona State University
Tempe, AZ