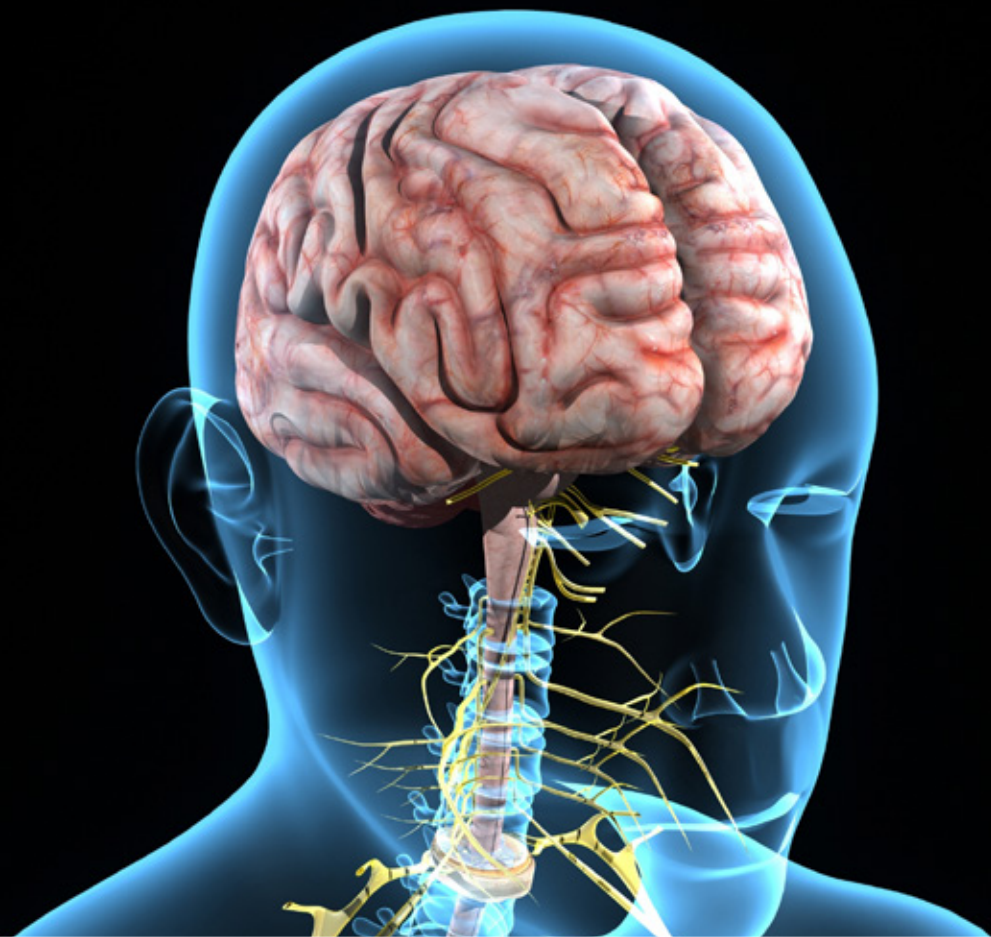


Hybrid Event (in-person & virtual)

Diagnosing and Managing Motor Speech Disorders Across the Continuum of Care

with Rene Utianski, PhD, CCC-SLP, BC-ANCDS



Saturday | Feb. 3, 2024
Registration and Agenda Inside

Goldman Auditorium
350 West Thomas Road | Phoenix, Arizona



Barrow
Neurological Institute

Course Description

Careful, differential diagnosis of motor speech disorders in adults can inform the neurological localization of symptoms, provide a framework to inform treatment decisions, and facilitate clinical discussions. This day-long course will review the differential diagnosis and management of the dysarthrias, acquired and progressive apraxia of speech, and functional speech disorders as they may be encountered across the continuum of care.

Course Objectives

Upon completion of the course, participants will be able to:

1. Describe the approach to differential diagnosis of motor speech disorders across the continuum of care.
2. Define the approaches to managing motor speech disorders across the continuum of care.
3. List the positive clinical features supportive of a functional speech disorder.

Who Should Attend

Speech-language pathologists

Continuing Education Credit

This course is offered for .65 ASHA CEUs (**Intermediate** Level, **Professional** Area).

Full attendance is required. Partial Credit is not offered.



ASHA CE
APPROVED
PROVIDER

**St. Joseph's Hospital & Medical
Center**

Intermediate Level

.65 ASHA CEUs

Hybrid Conference (in-person & virtual)

AGENDA

Saturday, Feb. 3, 2024

- 7 a.m.** ***Registration for In-person attendees***
- 7:55 a.m. Welcome and General Conference Information
- 8 a.m. The Dysarthrias
- I: Neural substrates and classic presentations encountered
 from stroke and other acquired etiologies
- II: Progressive disorders
- 9:15 a.m. Apraxia of Speech
- I: Acquired
- II: Progressive
- 10 a.m.** ***Break***
- 10:15 a.m. Apraxia of Speech (continued)
- 10:45 a.m. Functional Speech Disorders (diagnosis and management)
- Noon** ***Lunch Break*** (*Lunch provided to in-person attendees*)
- 1 p.m. Management of Motor Speech Disorders Across the
 Continuum of Care
- 2:30 p.m.** ***Break***
- 2:45 p.m. Case Studies, Interactive Listening Exercises, and Treatment
 Planning
- 4 p.m. Questions and Discussion
- 4:15 p.m.** **Adjourn**



Guest Faculty

Rene Utianski, PhD, CCC-SLP, BC-ANCDS

Rene Utianski, PhD, CCC-SLP, BC-ANCDS (she/her) is a consultant in the Department of Neurology at Mayo Clinic in Minnesota. She is an associate professor of speech pathology and neurology. She earned her BA in Psychology and Speech and Hearing Science from the George Washington University. She earned her MS in Communication Sciences and Disorders and PhD in Speech and Hearing Science from Arizona State University. She completed a research postdoctoral fellowship at Mayo Clinic-Arizona followed by a clinical postdoctoral fellowship at Mayo Clinic-Rochester. In her present role, her clinical responsibilities include differential diagnosis of acquired and degenerative speech and language disorders. Her research focus is to define the distinguishing clinical, acoustical, and neuroimaging characteristics of these neurological disorders, refine their differential diagnoses, and inform subsequent treatment.



Hotels

Embassy Suites by Hilton

10 East Thomas Road, Phoenix, AZ 85012

(602) 222-1111 | <https://www.hilton.com/en/hotels/phxeses-embassy-suites-phoenix-downtown-north/>

Hampton Inn Midtown

160 West Catalina Drive, Phoenix, AZ 85013

(602) 200-0990 | www.hamptoninn.com

What to do in Arizona

Arizona is known for its natural beauty and outdoor adventures. It's also home to a bustling metropolitan area with some of the world's finest chefs, shopping, and nightlife. Whether you explore Downtown Phoenix, Scottsdale, or other surrounding cities, your stay will be filled with memorable experiences. To learn more about the Phoenix area, go to visitphoenix.com or experiencescottsdale.com.

Dress

Dress for all sessions is business casual. Temperatures in Phoenix in February average from 72 degrees during the day to 48 degrees at night. Please keep in mind that meeting room temperatures vary, so wear layered clothing to ensure your comfort.

Registration

Diagnosing and Managing Motor Speech Disorders Across the Continuum of Care

Early Registration: \$175 (On or Before 1/20/24)

Late Registration: \$200 (After 1/20/24)

Student: \$90

Registration fee includes: Symposium, program materials and continuing education credits.

Refund and Cancellation Policy: Barrow reserves the right to cancel or change any program for due causes. Cancellation of this program by Barrow or by the participant prior to the start of the conference will result in a full refund of tuition.

[Register Here](#)



BarrowNeuro.org/MotorSpeech

Disclosure Policy Statement

It is the policy of St. Joseph's Hospital and Medical Center (SJHMC) to ensure balance, independence, objectivity, and scientific rigor in all its sponsored educational programs. Selection of presenters and content development may not be influenced by nonfinancial or financial interests. To that end, SJHMC shall identify and resolve conflicts of interest by requiring everyone who is in a position to control the content of the educational activity to disclose all relevant nonfinancial and financial relationships with commercial supporters.

Disclosure

Financial Disclosures

Honorarium and expenses covered by Barrow Neurological Institute for this conference

Salaried employee of Mayo Clinic

Royalties from book published with Plural Publishing on topic of Primary Progressive Aphasia and Apraxia of Speech

NonFinancial Disclosures

None

