

Center for Transitional Neuro-Rehabilitation (CTN) Work Re-Entry Program



For More Information

Phone: (602) 406-3473
Fax: (602) 406-4406
BarrowNeuro.org/CTN
CTN@CommonSpirit.org



Who We Are

The Center for Transitional Neuro-Rehabilitation (CTN) at Barrow Neurological Institute at St. Joseph's Hospital and Medical Center is often the final step in a patient's neuro-rehabilitation journey. CTN offers holistic, milieu outpatient programs to help patients return to independence and productivity in the home, at work, at school, and in the community. Predicated on compassion, dignity, respect, and expertise, the CTN provides guidance and support for patients and their families—enabling lasting, positive results of comprehensive neuro-rehabilitation.

Who We Serve

Older adolescents and adults, who are recovering from an acquired brain injury and intend to return to work, will benefit from this program. These patients are generally independent at home, but because of cognitive, language, physical, interpersonal, and emotional problems resulting from an acquired brain injury, have been unable to successfully return to a productive work life.

What We Do

Assessment

Comprehensive multidisciplinary evaluation to identify strengths and challenges, determine the potential for competitive employment, and determine length of treatment.

Therapy

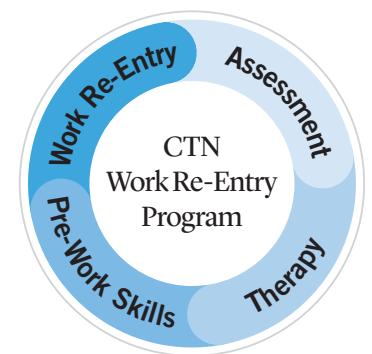
Therapy includes intensive individual and group therapies up to five days per week, including: physical therapy, occupational therapy, speech therapy, psychotherapy, psychiatry, social work, nutrition therapy, and recreational therapy to address deficits in preparation for competitive employment.

Pre-Work Skills

Vocational Group provides education on the job search, interview techniques, and workplace behaviors as well as practical pre-work experience. Situational assessments (therapist-monitored, unpaid pre-work placements) are experiences designed to further develop important work skills and behaviors.

Work Re-Entry

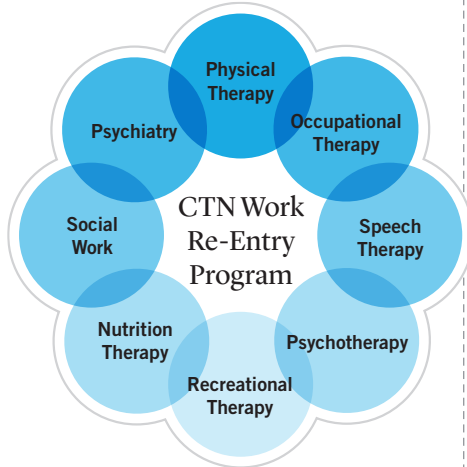
This track provides job search assistance to complete job applications, develop interview skills, and determine accommodations and restrictions. Vocational counseling is provided to obtain and maintain a "right fit" competitive employment position. Job coaching at the work site is focused on implementation of compensations and employer/co-worker education and training.



Continued on back

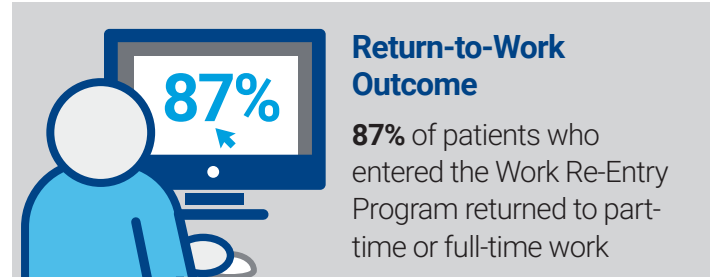
Admission Criteria

- Patients must be referred by a physician for the Work Re-Entry Program.
- Patients have an acquired brain injury/neurological diagnosis.
- Patients must be able to participate in group-oriented therapies within four to six weeks of admission to the program.
- Typically, patients must be able to participate in a situational assessment (therapist-monitored work site) within six to 12 weeks of entry to the program, with a return-to-work focus.
- Patients must not have major psychiatric problems that preclude their capacity to function as a productive and responsible community member, including substance abuse.
- Patients must have the capacity to increase their awareness and acceptance of their brain injury-related difficulties and become more realistic regarding a work position.
- Generally, patients must be able to work toward tolerating up to six to eight therapy sessions per day when they enter the treatment phase.
- Generally, patients must have accomplished the basic goals of the Home Independence Program and/or be independent with respect to basic self-care.
- Family members must be willing to attend in-person regular individual family meetings with a neuropsychologist or rehabilitation psychologist, other relevant staff, and the weekly Relatives' Group.
- There should be pre-injury evidence of relatively stable functioning in a work or school setting.



Program Outcomes

Data was compiled from patients who participated in the Work Re-Entry Program from 2022-2025



Type of Work

