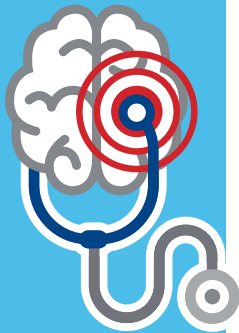


Program Overview

Barrow Neuro-Rehabilitative Services offers expert care for people who need intensive therapy after a stroke. The goal of Barrow neurorehabilitation specialists is to help patients have a better quality of life through therapies that help to improve skills, independence, and self-esteem after a stroke. Specific criteria are identified and must be met to qualify a patient for admission.

Number of
Patients Served

168



17.2 Days

Average Length of Stay

Ethnicity

- 1.8% Asian
- 4.2% African American
- 11.3% Native American
- 29.1% Hispanic
- 66.7% White

Patient Satisfaction

95.2%

Overall Satisfaction
with the Stroke Program

100%

of patients **felt the Stroke
Program prepared them**
for going home



Discharge Disposition

81.5% Home/Community Setting

10.1% Long-Term Care Setting

8.3% Acute Care for Medical Reasons



Intensity of Services / Participation Requirements

- Therapy services provided five to seven days a week
- Average of three hours of therapy per day, Monday through Friday with additional therapy on Saturday/Sunday
- Medical stability/absence of medical problems that would interfere with participation in therapies.
- Must be able to demonstrate progress towards meeting established team discharge goals.

This program does not currently serve persons who are:

- Ventilator dependent
- Medically unstable
- Unresponsive
- Under the age of fifteen years