

### Program Overview

Barrow Neuro-Rehabilitative Services offers unparalleled rehabilitative care for individuals after surviving a stroke. The primary goal of Barrow Neuro-Rehabilitation Specialists is to help patients enhance their quality of life through improved skills, maximized independence, and renewed self-esteem. Specific criteria are identified and must be met to qualify a patient for admission.

#### Intensity of Services / Participation Requirements

- Therapy services provided 5-7 days a week
- Average of 3 hours of therapy per day, Monday through Friday with additional therapy on Saturday/ Sunday
- Medical stability/absence of medical problems that would interfere with participation in therapies.
- Must be able to demonstrate progress towards meeting established team discharge goals.

#### This program does not currently serve persons who are:

- Ventilator dependent
- Medically unstable
- Unresponsive
- Under the age of fifteen years

#### Number of Patients Served



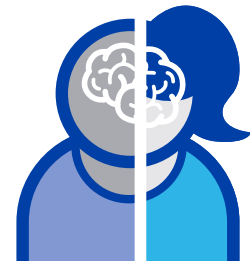
17.4  
Days

Average Length of Stay

#### Gender

Male: 55.2%

Female: 44.8%



#### Patient Satisfaction

97.1%

Overall Satisfaction with the Stroke Program

95.6% of the patients felt the program prepared them for going home.



#### Discharge Disposition

79.3% Home / Community Setting

10.8% Long Term Care Setting

9.9% Acute Care for Medical Reasons

0% Other

