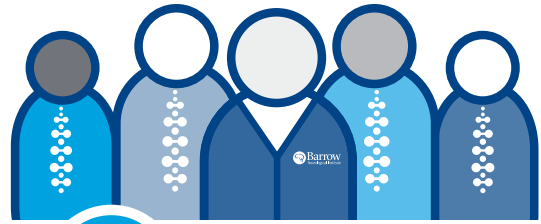


Barrow Outpatient Neuro-Rehabilitation Center Spinal Cord Injury Program Disclosure Statement 2021



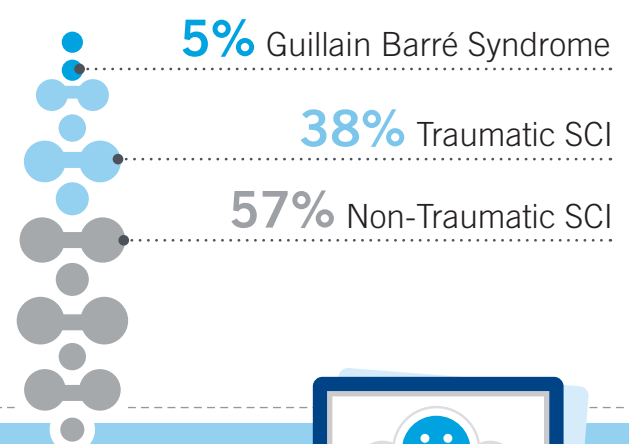
161 Total Number of Patients Seen



Age	15-18 5%	45-64 41%
	19-44 28%	65+ 26%



Program Make-up



Improvement in Functional Independence

Measured by the Spinal Cord Independence Measure
The Spinal Cord Independence Measure (SCIM III) is used to assess level of independence with self care, respiration and sphincter management, and mobility.

Barrow Spinal Cord Injury Program
Percentage increase from outpatient admit score

Acute <1 yr post injury/diagnosis

15% Increase

Chronic >1 yr post injury/diagnosis

7% Increase

Patient Satisfaction



Overall Satisfaction with the Spinal Cord Injury Program: **99%**

99% Likely to recommend Barrow Outpatient Neuro-Rehab