

Brain Injury Program Disclosure Statement 2025

434

Total Number
of Patients Seen

Age

15-18.....	17%	45-64.....	23%
19-26.....	17%	65+.....	17%
27-44.....	26%		



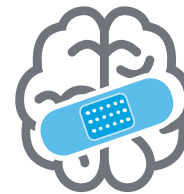
Gender

57% Female 43% Male



Average Number of Total Visits

30.3
Concussion



29.8
Brain Injury

Brain Injury by Type



40%
Traumatic
Brain Injury



60%
Concussion

Patient Satisfaction



99.6%
Overall Satisfaction with
the Brain Injury Program

99%
Likely to recommend Barrow
Outpatient Neuro-Rehab

Functional Improvement

The **Mayo-Portland Adaptability Inventory** is used to assess functional change in physical abilities, adjustment to an injury, and participation in life.

Functional Improvement After Completion of Outpatient Rehab



100%

of **Concussion and Brain Injury Patients** had meaningful improvement in function