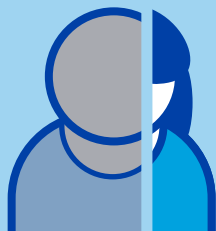


Total Number of Patients Seen



| | |
|------------|------------|
| 15-18..... | 0% |
| 19-26..... | 4% |
| 27-44..... | 8% |
| 45-64..... | 46% |
| 65+..... | 42% |

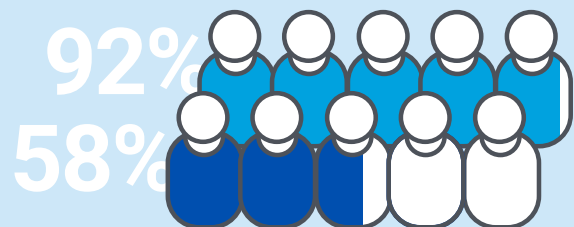


Gender
 Male: **67%**
 Female: **33%**

Functional Improvement

The **Mayo-Portland Adaptability Inventory** is used to assess functional change in physical abilities, adjustment to an injury, and participation in life.

Functional Improvement After Completion of Outpatient Rehab



92% of patients had MCID
(5 or more points)
58% of patients met RCID
(9 or more points)



Patient Satisfaction

99.6%
Overall Satisfaction
 with the Stroke Program

99%
Likely to recommend
 Barrow Outpatient Neuro-Rehab



Average Number of Total Visits

37.5