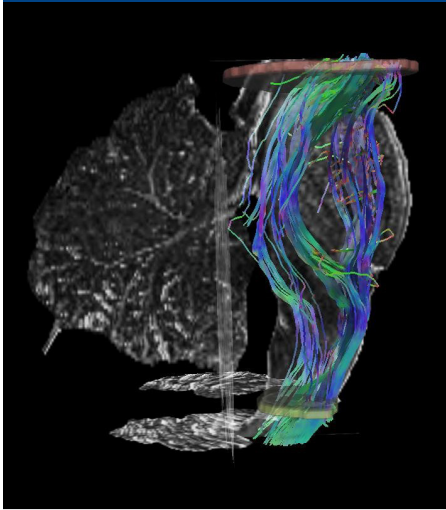


Barrow-ASU Center for Preclinical Imaging



Barrow Neurological Institute and Arizona State University share a mission of advancing biosciences across the state of Arizona. That's why we teamed up in 2009 to launch the Barrow-ASU Center for Preclinical Imaging, a core facility located at the Barrow Neuroimaging Innovation Center in the heart of Phoenix.

The Center provides Phoenix-area researchers with access to advanced imaging modalities, allowing them to examine the *in vivo* anatomy and function of their preclinical models. Additionally, our Center offers professional expertise to help researchers develop and implement their imaging protocols.

Interested in working with us?

Contact:

Ashley Stokes, PhD

Program Director,
Barrow Neurological Institute
(602) 406-8789
Ashley.Stokes@
BarrowNeuro.org

Alberto Fuentes

Research Engineer II
(602) 406-5595
Alberto.Fuentes@
DignityHealth.org



[BarrowNeuro.org/
Preclinicalimaging](https://BarrowNeuro.org/Preclinicalimaging)

MRI Techniques

The Bruker Biospec 7-Tesla MRI at the Center for Preclinical Imaging is capable of performing a suite of imaging techniques that explore many tissue characteristics. A few of the routine techniques include:

- High-Resolution Structural Imaging
- Resting State Functional MRI (fMRI)
- Dynamic Susceptibility Contrast (DSC) Perfusion Imaging
- Dynamic Contrast Enhanced (DCE) Imaging
- Diffusion Tensor Imaging (DTI)
- Time of Flight (TOF) Angiography
- Cardiac Imaging

Other Preclinical Imaging Resources

- Bruker Albira Si MicroPET
- Bruker Skyscan MicroCT
- Xenogen IVIS Spectrum®