

## Registration

Early Registration: \$175 (*On or before 9/29/17*)  
Late Registration: Add \$25 (*After 9/29/17*)  
Group Rate: \$145 each (*5 or more registrants from same facility-must register at same time*)  
Student Rate: \$90

Name: \_\_\_\_\_

Title: \_\_\_\_\_

Facility/Institution: \_\_\_\_\_

Address: \_\_\_\_\_

City: \_\_\_\_\_ State: \_\_\_\_\_ Zip: \_\_\_\_\_

Business Phone: \_\_\_\_\_

Fax: \_\_\_\_\_

Email: \_\_\_\_\_

### Payment:

Check made payable to:  
St. Joseph's Hospital and Medical Center

Charge my: American Express    Visa    MasterCard

Number: \_\_\_\_\_

Exp. Date: \_\_\_\_\_ V-Code \_\_\_\_\_

Printed Name on Card:

\_\_\_\_\_

Signature: \_\_\_\_\_

**Please return this form to:**  
Barrow Neurological Institute  
Attn: Conference Planning Office  
350 W. Thomas Rd. Phoenix, AZ 85013

**Or register online at:**  
[www.barrowneuro.org/?post\\_type=conference&p=28244&preview=true](http://www.barrowneuro.org/?post_type=conference&p=28244&preview=true)

Professional Education Office  
(Phone) 602-406-3067  
(Fax) 602-294-5028

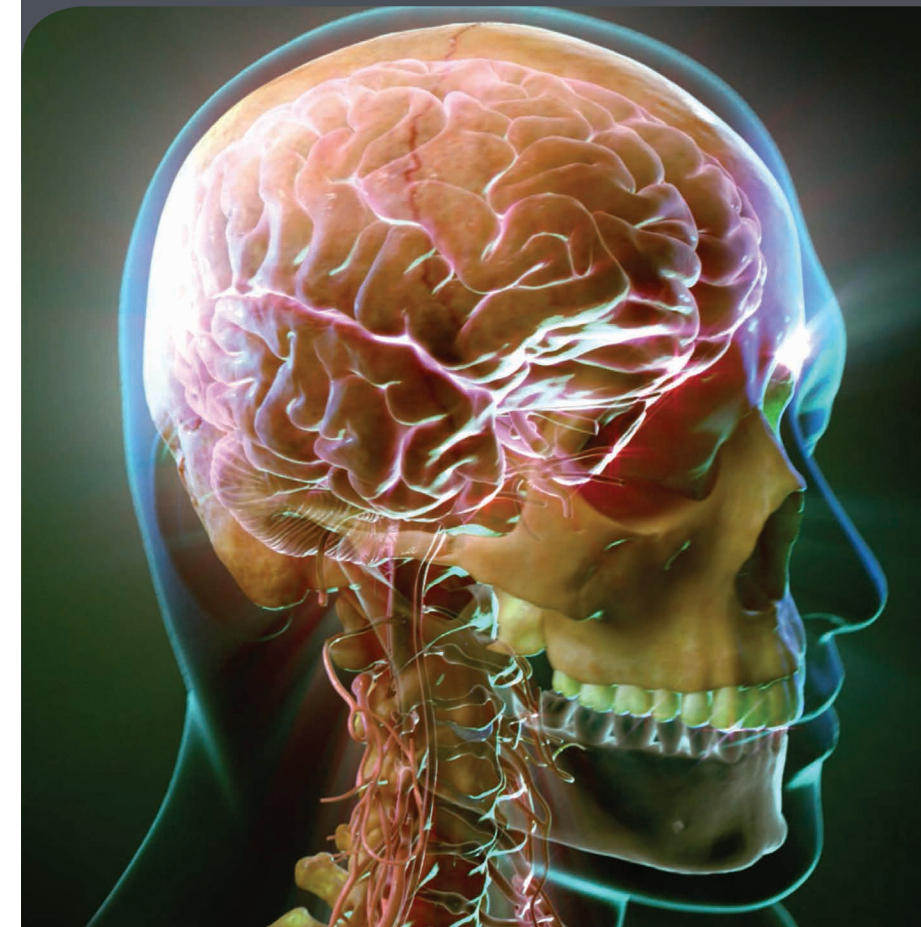
Nonprofit Org.  
U.S. Postage  
PAID  
Permit No. 685  
Phoenix, Arizona



Dignity Health Arizona  
St. Joseph's Hospital and Medical Center  
Barrow Neurological Institute  
350 W. Thomas Rd.  
Phoenix, Arizona 85013

# Beyond Workbooks: A Functional Approach to Cognitive Rehabilitation

October 21, 2017  
Barrow Neurological Institute | Phoenix, AZ



**BARROW**  
Neurological Institute

## Course Description

This one day course will focus on a functional approach to cognitive rehabilitation with the traumatic brain injury population and provide evidence based practice based on the six approaches to cognitive rehabilitation. Application will include areas specific to attention, memory, executive function and pragmatic communication. An assessment and treatment map will be identified and case studies will illustrate treatment approaches. Persistent cognitive and somatic symptoms will be discussed as well as considerations in the acute care setting and return to college population.

## Course Objectives

Upon completion of the course participants will be able to:

1. Identify six different approaches to cognitive rehabilitation.
2. Describe application of the approaches to evidence-based practice in cognitive rehabilitation.
3. Describe a framework for cognitive rehabilitation for mild Traumatic Brain Injury.
4. Identify cognitive rehabilitation strategies that facilitate successful college performance.
5. Identify a functional approach for cognitive rehabilitation in acute settings.

## Who Should Attend

Speech-Language Pathologists

## Continuing Education Credit

This course is offered for .65 ASHA CEU's (Intermediate level, Professional area). Full attendance is required. No partial CEU's for partial attendance.



**St. Joseph's Hospital and Medical Center** is approved by the Continuing Education Board of the American Speech-Language-Hearing Association (ASHA) to provide continuing education activities in speech-language pathology

and audiology. **See course information for number of ASHA CEUs, instructional level and content area.** ASHA CE Provider approval does not imply endorsement of course content, specific products or clinical procedures.

## Location

The Program will be held at the Leonard Goldman Auditorium.

## Hotels

### Hilton Suites

10 E. Thomas Road  
Phoenix, AZ 85012  
602-222-1111

[www.phoenixsuites.hilton.com](http://www.phoenixsuites.hilton.com)

### Hampton Inn Midtown

160 W Catalina Drive  
Phoenix, AZ 85013  
602-200-0990

[www.hamptoninn.com](http://www.hamptoninn.com)

## Agenda

### Saturday, October 21, 2017

7:30-8:30 *Registration and Continental Breakfast*

#### Morning Session

8:30-9:30 **Six Approaches to Cognitive Rehabilitation**

9:30-10:00 **A Mindful Approach to Workbooks**

10:00-10:15 *Break*

10:15-12:00 **Evidence-based Practice Applied to the Six Approaches to Cognitive Rehabilitation**

- Attention
- Memory
- Executive Function
- Pragmatic Communication

12:00-1:00 *Lunch provided*

#### Afternoon Session: Treating Patients with Persistent Cognitive and Somatic Symptoms Following Concussion

1:00 -1:15 **Understanding the Patient Population**

1:15-1:30 **Cognitive Treatment Evidence**

1:30-2:30 **Assessment and Treatment Map**

2:30-2:45 *Break*

2:45-3:00 **Assessment and Treatment Map**

3:00-3:30 **Case Studies**

3:30-4:10 **Cognitive Rehabilitation and Return to College**

4:10-4:40 **Cognitive Rehabilitation in the Acute Care Setting**

4:40-4:45 **Closing Remarks**

## What to do in Arizona

### Dining

Phoenix is home to some of the world's finest chefs and the best restaurants offering your taste buds the opportunity to try everything from Thai to Mexican to traditional American cuisine. To learn more about the dining options you will have during your stay in Phoenix, visit [www.azcentral.com/ent/dining](http://www.azcentral.com/ent/dining).

### Shopping

There are many venues to shop in Phoenix, including the Biltmore Fashion Park, Kierland Commons, Desert Ridge Marketplace, Scottsdale Fashion Square, Chandler Fashion Center, The Borgata of Scottsdale and endless smaller boutiques throughout the state.

### Dress

Dress for all sessions is business casual. Temperatures in Phoenix in May average from 92 degrees during the day to 60 degrees at night. Please keep in mind that meeting room temperatures vary, so wear layered clothing to ensure your comfort.

## Guest Faculty



### Don MacLennan

Don MacLennan is the Chief of the Speech Pathology Section at the Minneapolis VA Health Care System. He has provided cognitive rehabilitation across the continuum of care to veterans and active duty service members for over 30 years and is a frequently invited speaker on the topic of cognitive rehabilitation.. He has served as a consultant to the Department of Defense on provision of cognitive rehabilitation to service members with mild TBI and comorbid conditions. In 2008 he was awarded the Rick L Bollinger Clinician of the Year Award for clinical excellence in his work with veterans experiencing brain injury and Polytrauma. He currently serves in a Polytrauma Transition Rehabilitation Program supporting veterans and active duty service members as they return to the community, including return to work and school.



## Disclosure Policy Statement

It is the policy of St. Joseph's Hospital and Medical Center (SJHMC) to ensure balance, independence, objectivity, and scientific rigor in all its sponsored educational programs. Selection of presenters and content development may not be influenced by nonfinancial or financial interests. To that end, SJHMC shall identify and resolve conflicts of interest by requiring everyone who is in a position to control the content of the educational activity to disclose all relevant nonfinancial and financial relationships with commercial supporters.

### DISCLOSURES

**Financial:** No disclosures. **Nonfinancial:** No disclosures.